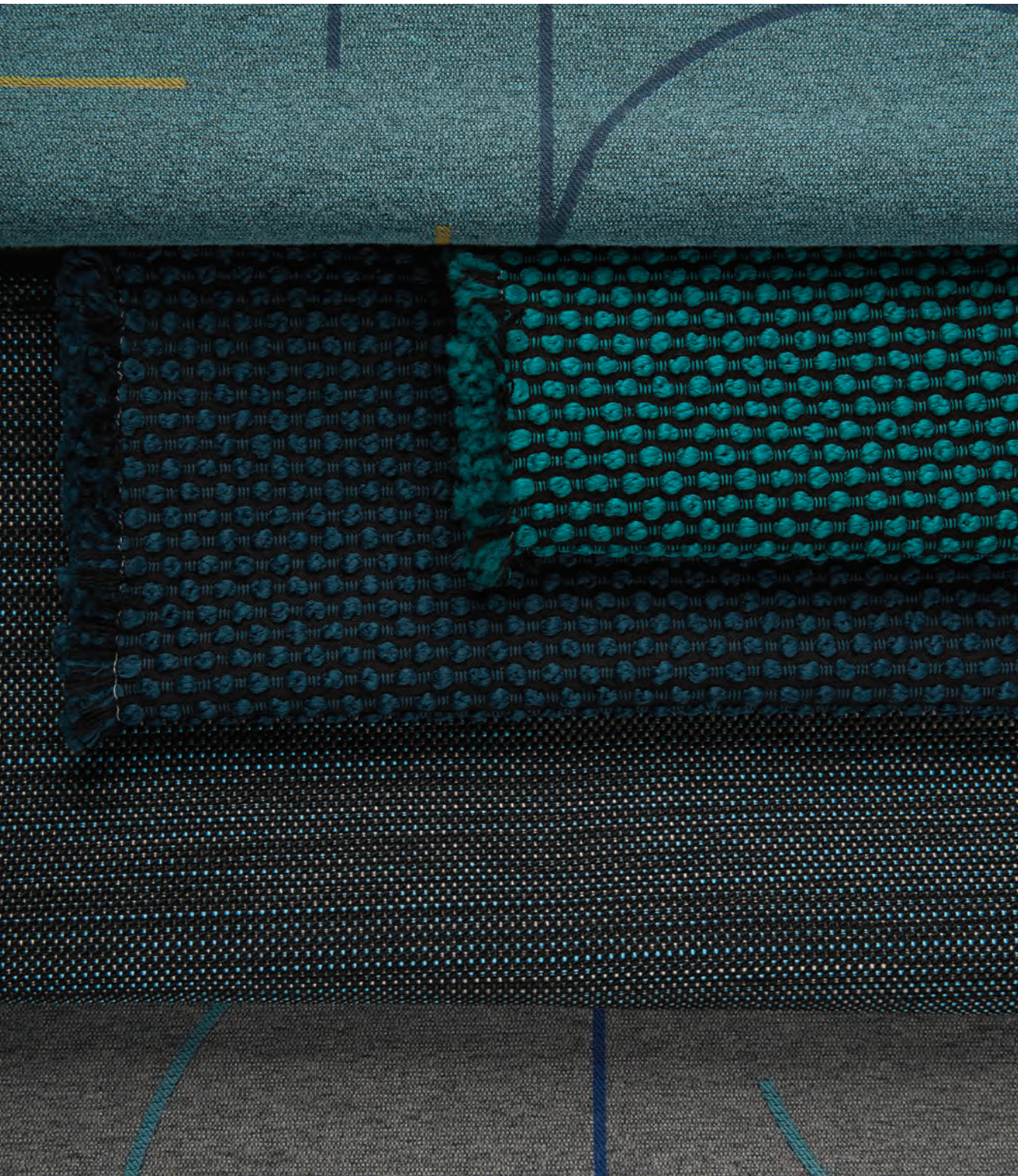


LUUM

Focus In Collection

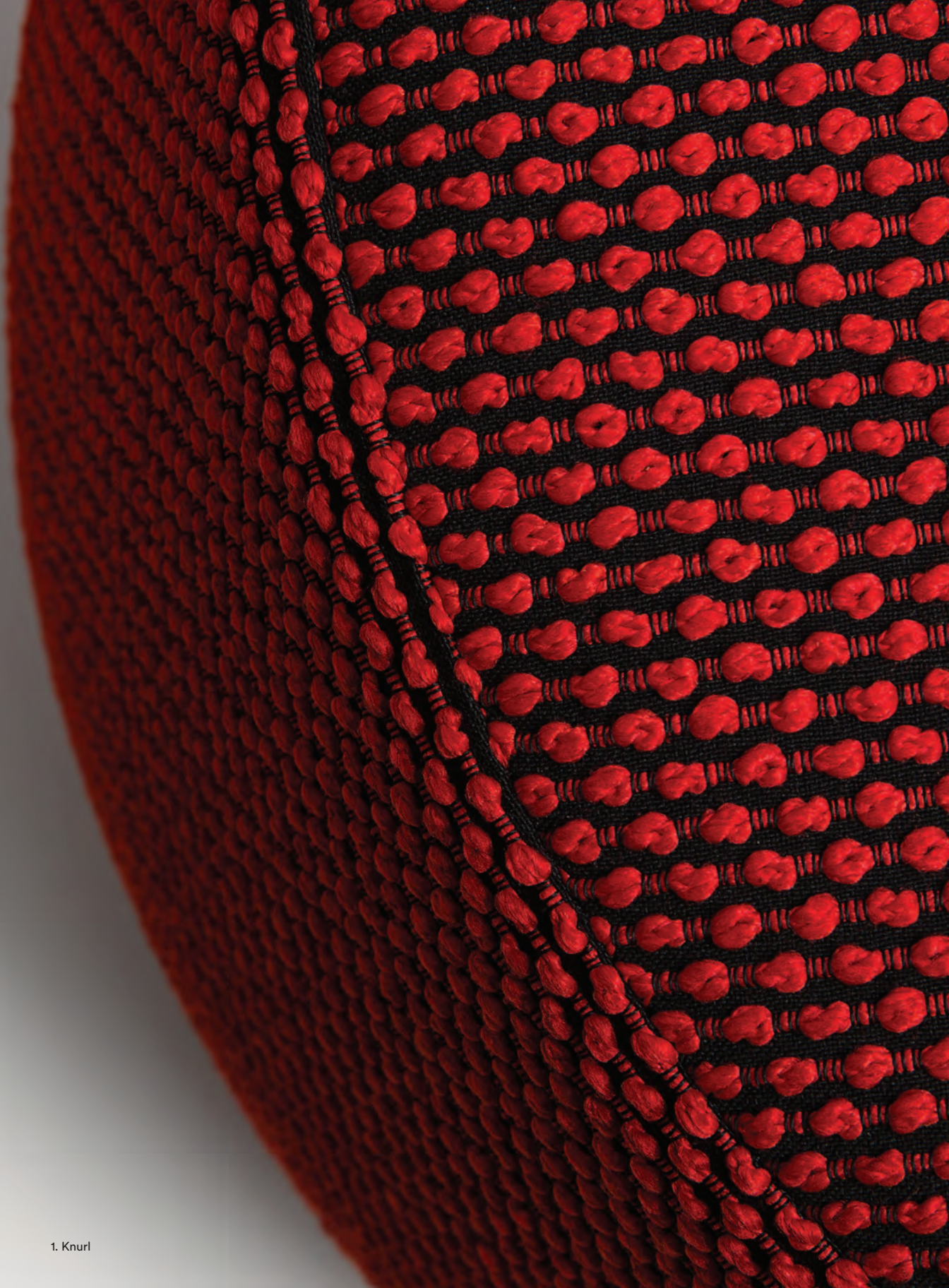
6 — 2017

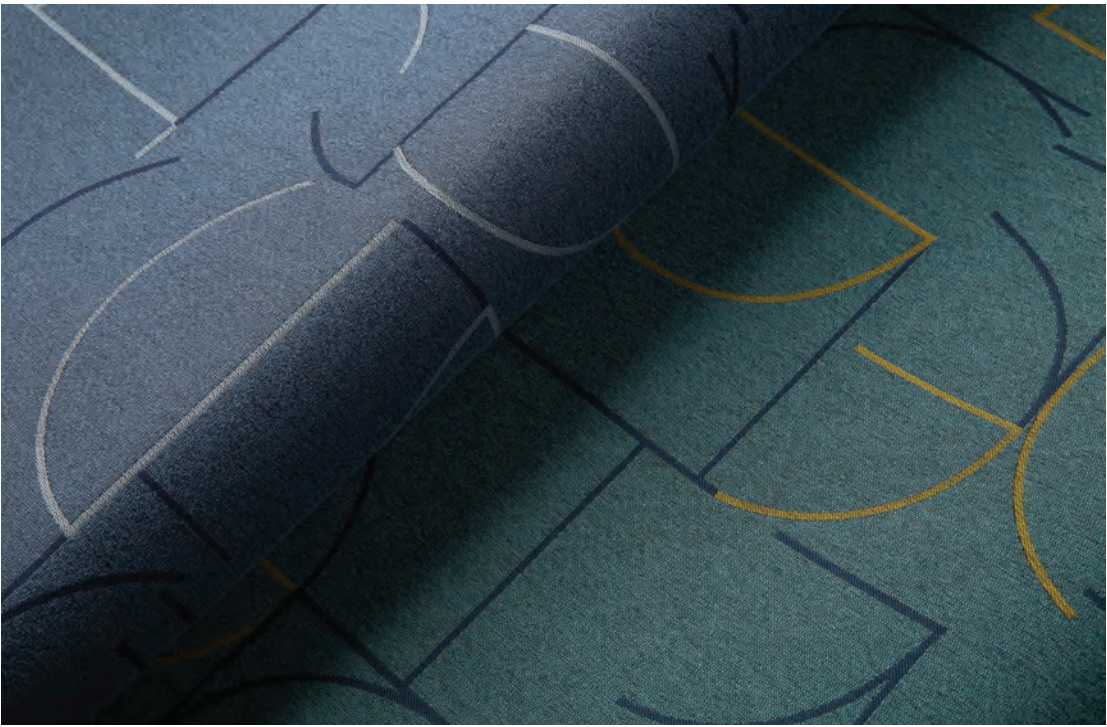


Focus In Collection

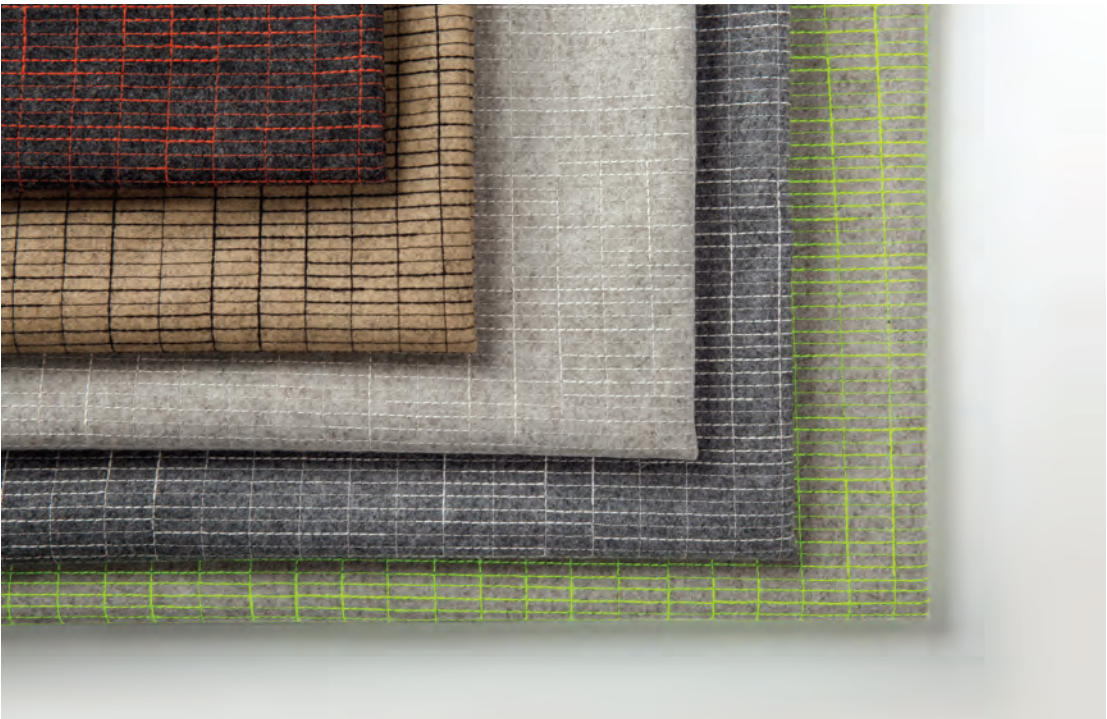
Technology continues to redefine the way we engage, think and feel about interiors. The traditional modes of interaction in offices, schools and hotels are being transformed through new tools that enable rapid communication. With advancements in technology encouraging mobility and flexibility, the importance of adaptable products is addressed through the *Focus In Collection*.

Multi-purpose environments that offer interchangeable areas are now the norm. The aesthetic and performance qualities of products specified within these fluid spaces require an agility that supports a range of activities. The Focus In Collection designed by Suzanne Tick for Luum offers a collection of seven fabrics that reflect this nimble attitude.





2. Outpress



3. Navigate

1 ——— Knurl

As the distinction between our work, home and social activities becomes increasingly blurred, *Knurl* is a textural upholstery fabric that comfortably lives in a workplace or residential setting. The straightforward weave structure allows thick, nubby rows of polyester yarns to shine. The color and exaggerated texture provide opportunities to create visual interest. The palette offers saturated chartreuse and teal as well as fiery reds and a range of sophisticated neutrals.

Use: Upholstery

Content: 63% Polyester + 17% Cotton + 15% Nylon + 5% Acrylic

Number of Colorways: 11

(shown here): Stimulus

Abrasion: ASTM D4157 Wyzenbeek 40,000 double rubs

2 ——— Outpress

Whether at work or play, both visible and invisible systems map our movements. *Outpress* draws inspiration from paths that guide us towards focusing our energies on a specific activity or goal. Curvilinear forms join and split across fields of heathered yarns evoking architectural structures. Offered in a palette of neutrals and brights, *Outpress* is a statement pattern that easily works within educational and corporate environments.

Use: Upholstery

Content: 82.67% Polyester + 17.33% Nylon

Number of Colorways: 9

(shown here, left to right): Denim, Caribbean

Abrasion: ASTM D4157 Wyzenbeek 105,000 double rubs

Special Characteristics: Heavy Metal Free, PFOA/PFOS Free Stain-Repellent

3 ——— Navigate

A bright line of thought led us to *Navigate*. Echoing architectural structures, the applied pattern is a marriage of hand and machine processes. A stitched line subtly fades in and out across a variegated ground capturing the spirit of an active environment. *Navigate* addresses the need for sound-absorbing materials by utilizing as its base cloth Heather Felt, a 100 percent felted wool.

Use: Upholstery

Content: 92.5% Wool, 5.4% Nylon, 2.1% Nylon

Number of Colorways: 5

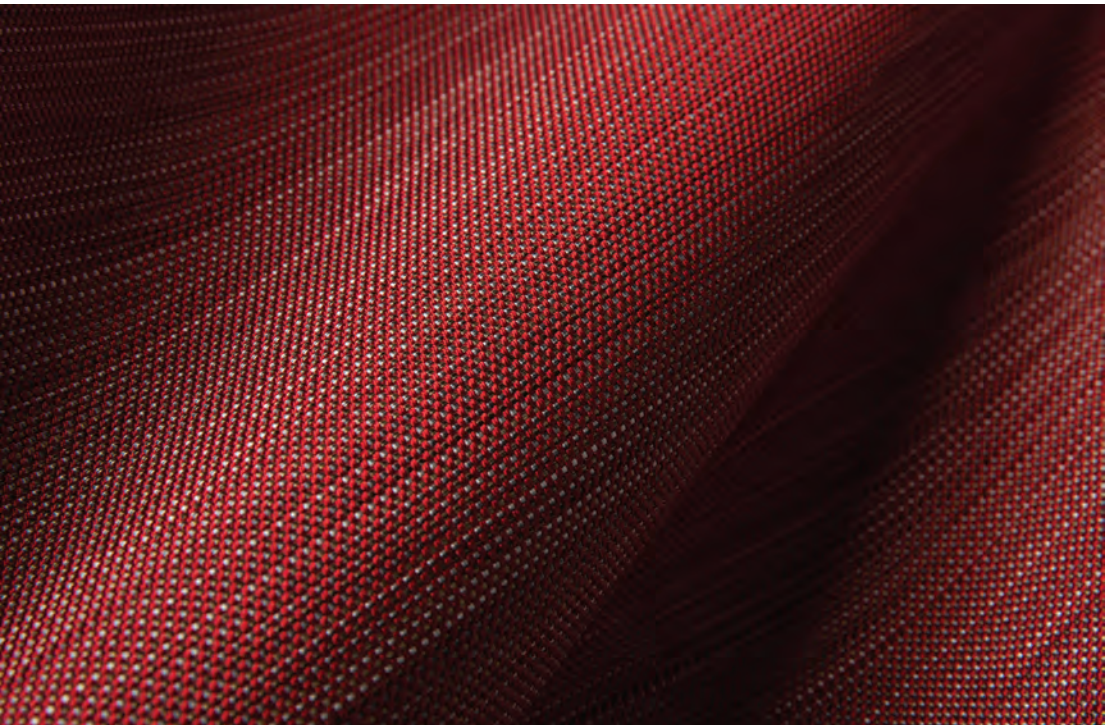
(shown here, top to bottom): Network Orange, Interlace Camel, Pumice, Reticulated Stone, Fluorescent

Abrasion: ASTM D4966 Martindale 40,000 cycles

Special Characteristics: Chemical Finish Free, MBDC c2c certified Silver

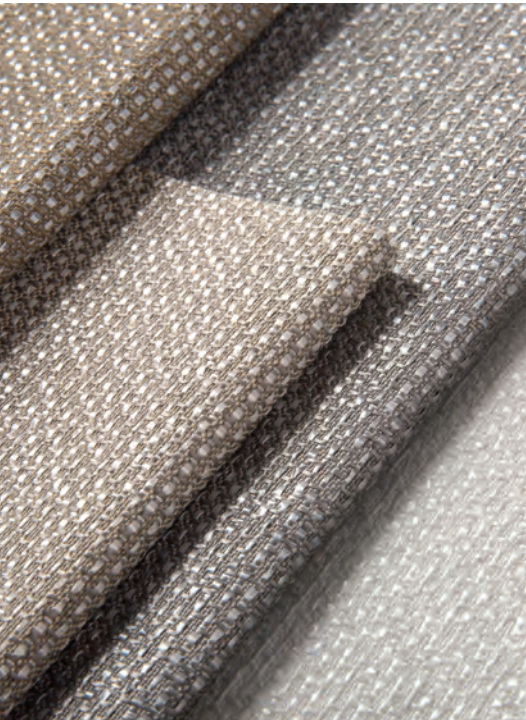
Custom colors are encouraged through our Luum Stitch Program





5. Amalgam

6. Mica Shift



7. Technoplaid



4 ——— Heather Felt

Heather Felt is a classic, 100 percent felted wool with a supple hand and heathered surface. The palette has been refreshed with the addition of brighter hues and timeless neutrals. The darker undertone of the overdyed fabric grounds the palette and makes it easy to use with other fabrics and finishes. Heather Felt's texture softens environments, absorbs sound and creates a sense of comfort and warmth.

Use: Upholstery/Wrapped Wall

Content: 100% Wool

Number of Colorways: 16

(shown here, top to bottom): Armor, Grove, Marina, Bran, Scarlet, Falcon

Abrasion: ASTM D4966 Martindale 70,000 cycles

Special Characteristics: Chemical Finish Free, MBDC c2c certified Silver

5 ——— Amalgam

Drawing upon the innovative material advancements within the athletic industry, *Amalgam* is woven with fibers that are also used in footwear. The multi-colored, marled yarns are tightly woven into a balanced weave to achieve 100,000 double rubs, embodying the hybridization of high-end and performance qualities typically required in sportswear.

Use: Upholstery

Content: 100% Polyester

Number of Colorways: 9

(shown here): Fuse

Abrasion: ASTM D4157 Wyzenbeek 100,000 double rubs

6 ——— Mica Shift

Utilizing a lustrous tape yarn, *Mica Shift* brings new light into a space through a textural weave. The tape yarn floats against a matte ground weave offered in bright whites, warm neutrals and cool silvers. Joining the group of vertical fabrics incorporating tape yarns, this direct-glue product adds an organic yet technical element to an interior.

Use: Direct Glue Wall

Content: 100% Polypropylene

Number of Colorways: 6

(shown here, left to right): Gneiss, Grainstone, Muscorite, Silicate

Special Characteristics: Heavy Metal Free, PFOA/PFOS Free Stain Repellent

7 ——— Technoplaid

Darker, moodier color palettes are moving into the workplace to provide spaces of respite and comfort. Addressing this need, *Technoplaid* is a contemporary, large-scale plaid with a metallic accent fiber for use as wrapped wall and panel. The colorline offers dark hues in Wireframe and Nano as well as bright neutrals in Ultra and Meta.

Use: Wrapped Wall/Panel

Content: 97% Polyester + 2% Metallic Polyester + 1% Nylon

Number of Colorways: 4

(shown here, top to bottom): Ultra, Meta, Wireframe, Nano

Special Characteristics: Oeko-Tex 100 Certified

USA, Canada 877.705.LUUM

International 919.464.2922

luumtextiles.com